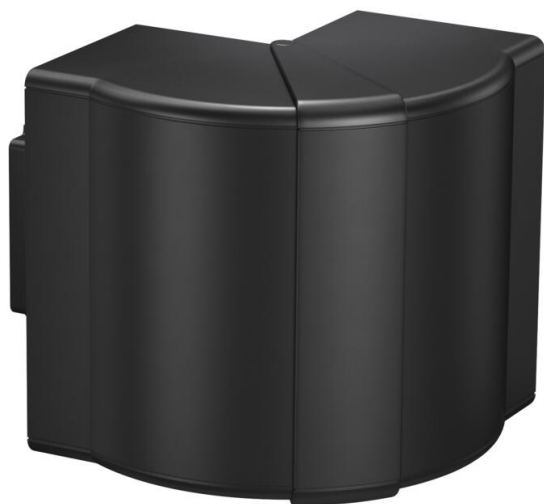


# Technical data sheet

External corner cover, for device installation trunking Rapid 80 type 70130

Item number: 6274413



External corner cover made of halogen-free PC/ABS for changing the direction of Rapid 80 device installation trunking of the GK, GKH, GS and GA systems. The fittings can be variably adjusted between 80° and 100° and can be used in symmetrical and asymmetrical trunking.



Polycarbonate/Acrylnitrile-butadiene-styrene

## Master data

|                     |  |
|---------------------|--|
| Item number         | 6274413                                      |
| Description 1       | External corner                              |
| Description 2       | variable                                     |
| Manufacturer        | OBO  |
| Dimension           | 70x130                                       |
| Colour              | Jet black; RAL 9005                          |
| Material            | Polycarbonate/Acrylnitrile-butadiene-styrene |
| Smallest sales unit | 1  |
| Unit of quantity    | Piece  |
| Weight              | 18.535 kg                                    |
| Weight unit         | kg/100 pc.                                   |

## Dimensions

|        |          |
|--------|----------|
| Length | 130.5 mm |
| Width  | 139 mm   |
| Height | 73 mm    |

# Technical data sheet

External corner cover, for device installation trunking Rapid 80 type 70130

Item number: 6274413



## Technical data

|                                   |              |
|-----------------------------------|--------------|
| Number of covers                  | 1            |
| Version for                       | Hood fitting |
| for duct width                    | 130 mm       |
| for trunking height               | 70 mm        |
| Halogen-free                      | yes          |
| Cable retaining clip              | no           |
| Duct connector                    | no           |
| Cover mounting type               | Cross-over   |
| Mounting perforation in base      | no           |
| Cover width                       | 0 mm         |
| Cover width 2                     | 0 mm         |
| Cover width 3                     | 0 mm         |
| Protective film                   | no           |
| Symmetrical                       | yes          |
| Permitted temperature range, max. | 60 °C        |
| Permitted temperature range, min. | -5 °C        |
| Angle range, max.                 | 100 mm       |
| Angle range, min.                 | 80 mm        |