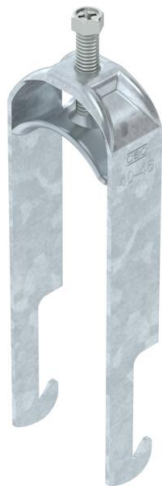


Technical data sheet

Clamp clip 2056, W-foot, double, metal pressure trough, FT

Item number: 1188359



Clamp clip with W-foot, metal pressure trough with rounded edges to protect the cable. For vertical and horizontal mounting of 2 single cables on angle irons < 40 mm. With 1-start screw thread on pressure trough, universal hexagonal screw head WAF10, with slot and cross recess. Suitable for mounting indoors and outdoors. We recommend the use of a counter-trough.



St Steel

FT Hot-dip galvanised

Master data

Item number	1188359
Type	BS-W2-M-46 FT
Description 1	Clamp clip 2056
Description 2	double
Manufacturer	OBO
Dimension	40-46mm
Material	Steel
Surface	Hot-dip galvanised
Surface standard	DIN EN ISO 1461
Smallest sales unit	25
Unit of quantity	Piece
Weight	14.948 kg
Weight unit	kg/100 pc.

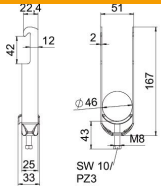
Technical data sheet

Clamp clip 2056, W-foot, double, metal pressure trough, FT

Item number: 1188359



Dimensions



Length	25 mm
Width	51 mm
Height	167 mm
Plate thickness	2 mm
Dimension A	25 mm
Dimension B	51 mm
Dimension C	33 mm
Dimension G (mm)	M8
Dimension H	167 mm
Dimension L	43 mm
Dimension t	2 mm

Technical data

Number of cables/pipes	2
For pipe diameter, max.	46 mm
For pipe diameter, min.	40 mm
Thread	M8
Halogen-free	yes
Length of external dimensions	33 mm
Max. Tightening torque	5 Nm
With metal trough	yes
Mounting type	Angle profile
Slot width	10 mm
Clamping range D, max.	46 mm
Clamping range D, min.	40 mm
Surface addition	hot galvanised
Material addition	Steel